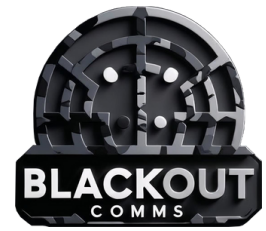


Using Blackout Comms



For the most part, use Blackout Comms like any other messaging app.

Blackout Comms on T-Deck & T-Deck Variants



For T-Decks, the touchscreen and trackball are primary ways you interact. The keyboard is used only when you are typing text.



Touch or Swipe

- Swipe the screen to scroll up and down
- Tap/touch icons

Type on the Keypad

- For all text entry
- Hold sym key for numbers & symbols
- Alt+B for backlight



Roll the Trackball

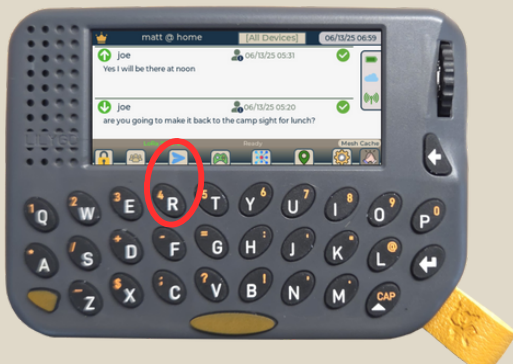
- Wakes up the display
- Scrolls the display up and down

Click the Trackball

- Wakes up the display
- Toggles between Home & Neighbors
- Other screen-specific functions

Blackout Comms on Lilygo Pager

The Lilygo Pager is similar to T-Deck, in terms of capabilities and components, except that **you interact with it entirely using the scroller and keyboard**. The pager does not have a touchscreen, so on-screen buttons are aligned with keyboard buttons.



For instance, on the home screen, you create a new message using the 'R' key, which lines up below the message button.

On screens that accept text input (like the new message screen), you can **toggle the keyboard between button mode and text typing mode using the scroller**. Check the screen for instructions.

Power On: Press & Hold

Power Off: Tap Twice

Reset



SD Compatibility

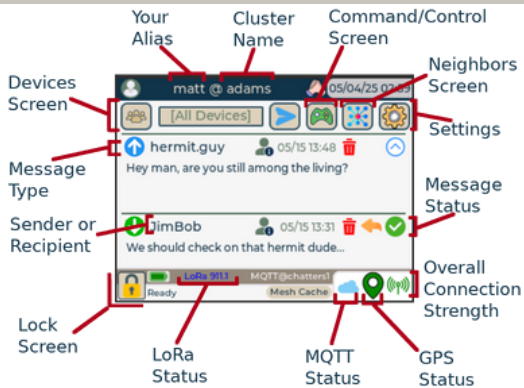
If you are using SD cards (recommended), you can move a T-Deck's SD card over to a pager (and vice versa). It will carry over *all* settings, messages, and password protection.



The screen layouts may vary, depending on which device type you are using, but the icons and functionality are the same across all devices.

Home

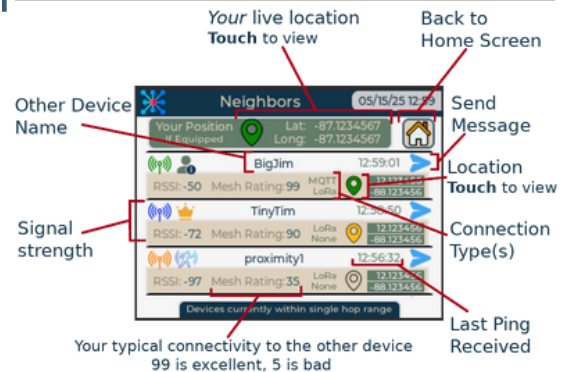
View/reply to messages, device status.
This is the main screen of ChatterBox.



Trackball Click to switch back and forth

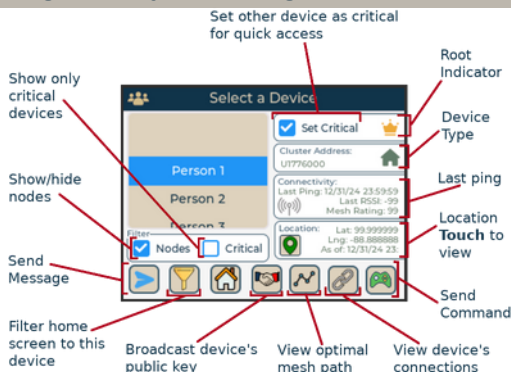
Neighbors

View live signal strength & GPS coordinates of in-range devices



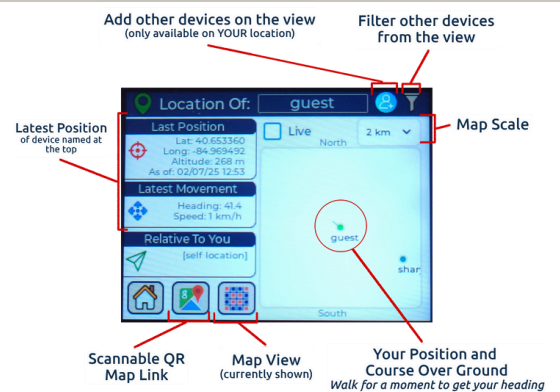
Cluster Devices

See all devices in the cluster (even out-of-range), filter your message view, more.



Location

Last known location for any device in your cluster (even out-of-range), where they are in relation to you.



Direct Message

- For sending to a single person
- Happens automatically if you select a specific person/device when sending a message
- Use DM in all cases possible
- Highest delivery success
- Uses smart mesh path planning to route message



Broadcast

- For sending to as many people as possible
- Happens automatically when you choose [All Devices] when sending
- Only use when necessary
- No delivery guarantees
- Can tie up bandwidth if many are sent in a short time

Important Icons

	You sent DM (not mesh)
	You received DM (not mesh)
	You sent DM via mesh
	You received DM via mesh
	You sent a broadcast
	You received a broadcast

	All message packets sent directly, not yet confirmed
	DM: Message was decrypted/validate and fully delivered to the other device
	Broadcast: At least one other device is now re-broadcasting your message
	Message packets are waiting to mesh in your out queue
	Your message was accepted into the mesh cache, and other devices are pushing it toward the recipient
	Your message is confirmed delivered & accepted by the end recipient via mesh



	Live GPS
	Stale GPS
	No GPS

	Excellent
	Very good
	Decent
	Fair
	Weak or none

	Communicator
	Root
	Link
	Proximity Sensor
	Relay Link
	Thermal Camera

	MQTT connected & healthy
	MQTT not enabled
	MQTT enabled, but not healthy - WiFi connected
	MQTT enabled, but not healthy - WiFi disconnected





Amped Communicators

Amped communicators can transmit *much* farther than standard communicators.

Amped communicators have a LoRa amplifier, second battery, and controller built into the back of the enclosure.



- **Both** the T-Deck's battery and amp's battery must be charged
- The amp has its own on/off switch
- Both the amp & communicator must be powered on, or you'll only be able to transmit a few feet
- **You can charge them simultaneously** or one at a time
- **Never turn the amp on unless the T-Deck is on and the antenna is connected**
- Don't forget to turn the amp off when you turn the T-Deck off

Amp Charging Port

The amp battery is charged separately from the T-Deck battery. You can charge both at the same time or independently.

Amp On/Off Switch

Keep it on any time the T-Deck is on, remember to power it off whenever you power the T-Deck off.

T-Deck Charging Port

For charging the T-Deck battery and flashing the T-Deck firmware

