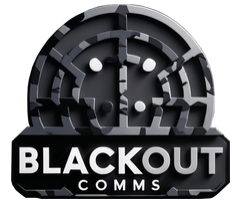




Using Blackout Comms



For the most part, use Blackout Comms like any other messaging app.



The touchscreen & wake button are the primary ways you interact with Blackout Comms.



Wake Button

- Wakes up the display
- Push it any time to get the device's full attention

Touch or Swipe

- Swipe screen to scroll up and down
- Tap/touch icons



Lock the Screen

- Touch the lock button on the lower-left corner
- Push the wake button to wake it back up

Online Support



<https://chatters.io/support>

Mesh Performance

Blackout Comms performs best when all devices in your cluster remain powered on as often as possible. When powered on, each device is available to receive messages and assist in caching/forwarding of other messages for your cluster.



Direct Message

- For sending to a single person
- Happens automatically if you select a specific person/device when sending a message
- Use DM in all cases possible
- Highest delivery success
- Uses smart mesh path planning to route message



Broadcast

- For sending to as many people as possible
- Happens automatically when you choose [All Devices] when sending
- Only use when necessary
- No delivery guarantees
- Can tie up bandwidth if many are sent in a short time

Home

Tap wakeup button any time to get to this screen.



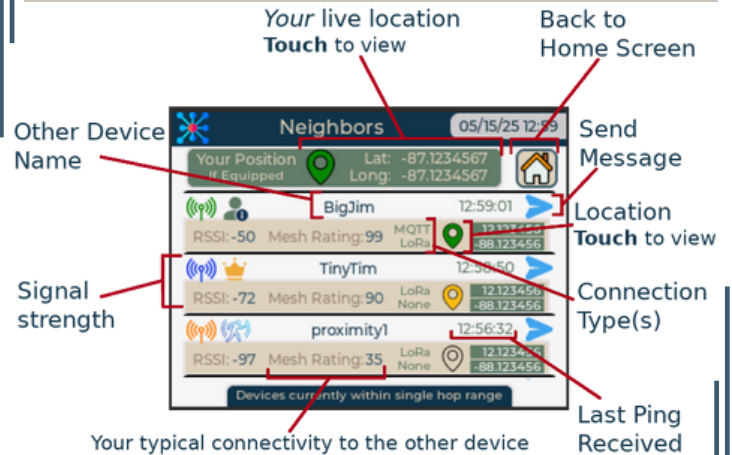
Lock Screen

GPS Connectivity

Cluster Connectivity

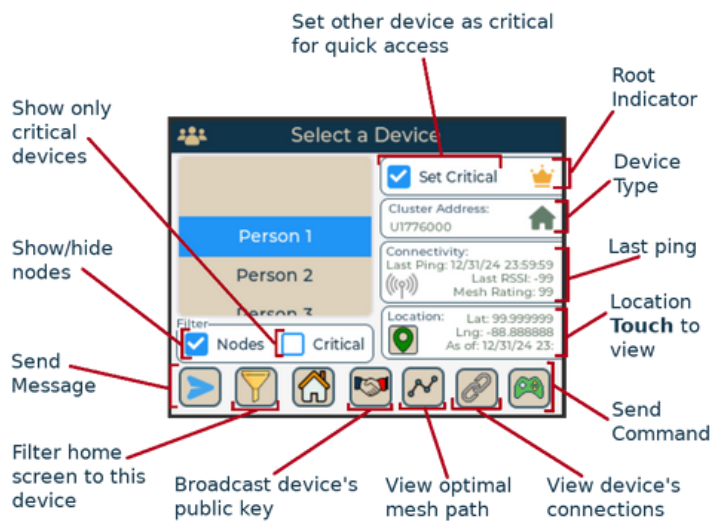
Neighbors

View live signal strength & GPS coordinates of in-range devices



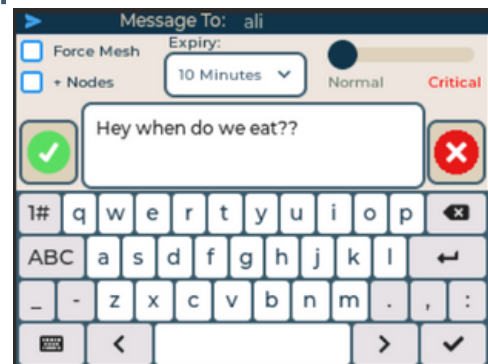
Cluster Devices

See all devices in the cluster (even out-of-range), filter your message view, more.



Sending a Message

Touch the send button, type your message, and touch the check button.



Important Icons

	You sent DM (not mesh)
	You received DM (not mesh)
	You sent DM via mesh
	You received DM via mesh
	You sent a broadcast
	You received a broadcast

	All message packets sent directly, not yet confirmed
	DM: Message was decrypted/validate and fully delivered to the other device
	Broadcast: At least one other device is now re-broadcasting your message
	Message packets are waiting to mesh in your out queue
	Your message was accepted into the mesh cache, and other devices are pushing it toward the recipient
	Your message is confirmed delivered & accepted by the end recipient via mesh



	Live GPS
	Stale GPS
	No GPS

	Excellent
	Very good
	Decent
	Fair
	Weak or none

	Communicator
	Root
	Link
	Proximity Sensor
	Relay Link
	Thermal Camera

	MQTT connected & healthy
	MQTT not enabled
	MQTT enabled, but not healthy - WiFi connected
	MQTT enabled, but not healthy - WiFi disconnected

